



7 DAYS RETREAT, ONE & NYUNGWE HOUSE & ONE ONLY GORILLAS NEST LODGE

Day 1: ARRIVAL → KIGALI

Arrival of your flight at Kigali International Airport. **VIP** Meet and greet assistance. You will be warmly welcomed by our company representative outside customs and immigration hall. Transfer to **The Retreat Hotel** for check in. If time permits, you will be briefed about your tour at the hotel lobby.



Dinner and overnight stay.

THE RETREAT BY HEAVEN (HB – Dinner, Bed and Breakfast)
rooms

Room category : Deluxe king

Day 2: KIGALI - NYUNGWE NATIONAL PARK (7 h00 drive) / BROCHURED ACTIVITIES OFFERED AT THE LODGE

08h00: After early breakfast at the hotel, you will check out and settle all extras. You will be transferred to **NYUNGWE FOREST** National Park. Arrive at the lodge where you will be assisted with check in. Have lunch. Spend the afternoon free at leisure relaxing at the lodge or you may take part in some of the complimentary brochured activities offered at the property.



Saddle up and explore the beautiful surrounds of the property, with the breeze in your hair, at a pace that suits you. There's a few hills around and some dirt track riding, but let your friendly guide know and he/she can tailor the journey to your comfort levels. Discover the incredible history and geography of the property on a walking tour tailored to your pace and abilities. From the furry and feathered neighbors, and where best to spot them, to tales of the unique landscape, your guide will share stories that add a whole new dimension to your connection with this awe-inspiring corner of the planet.

Dinner and overnight stay



ONE & ONLY NYUNGWE HOUSE (All Inclusive- Lunch, Dinner, Bed and breakfast, a selection of drink) Room category : Nyungwe Rooms

Day 3: NYUNGWE (CHIMPANZEE TREKKING & CANOPY WALK)

Today at **05h00** you will get your packed breakfast and drive to the park headquarters for chimpanzee trek briefing and formalities and then to the evergreen forest for a great experience that starts at **06h00**. You may spot a wide variety of bird life.

Dashing at high speed through the flora, hooting and clanging – it's a truly exhilarating experience to encounter chimpanzees playing, wild and free. Home to one of East Africa's last intact chimpanzee populations, Nyungwe is an ideal place to observe chimps in their natural habitat. Most active in the morning, an early rise is required for maximum viewing opportunity, and a beautifully prepared breakfast will be enjoyed 'on the go'. Allow experienced, expert trackers to guide you on a deep forest trail, learning about these fascinating creatures and the enchanting forest they call home.



Return to the lodge at around **11h00**. **12h30**: Have an early lunch followed by brief rest. We will later transfer you to the park headquarters for canopy walk briefing that takes place at **14h00**. Your guided canopy walk will start at **15h00**.

Experience the rainforest from a dazzling new perspective – on the famous Canopy Walkway. The only walk of its kind in East Africa, this breathtaking construction hangs 60 metres above the forest floor between giant trees and towers, revealing a stunning view of the flora and fauna, both below and above. An iconic experience, not to be missed!



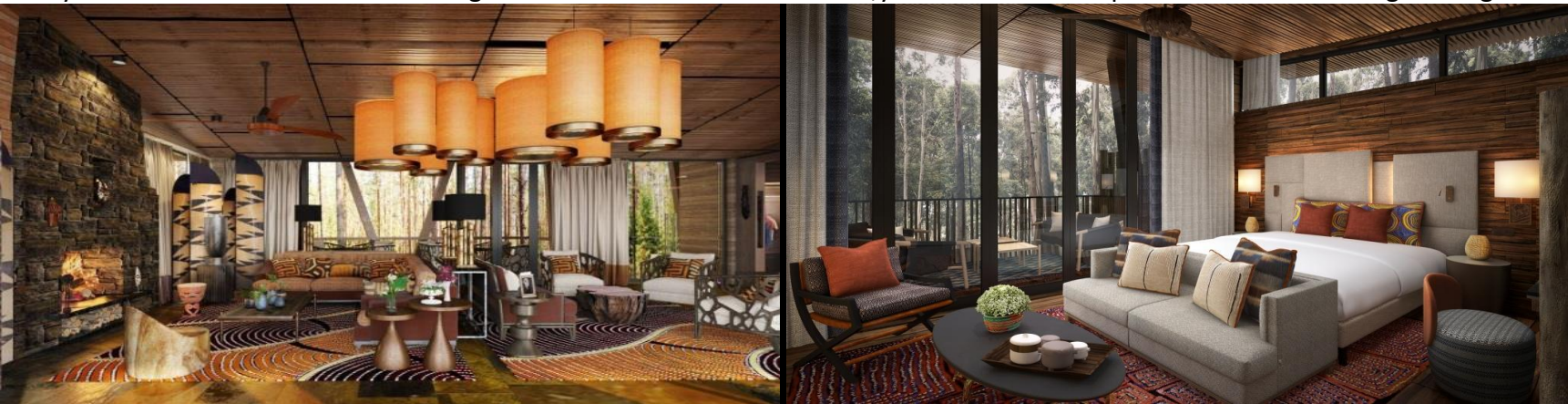
Return to the lodge later in the evening.
Dinner and Overnight stay.



ONE & ONLY NYUNGWE HOUSE (All Inclusive - Lunch, Dinner, Bed and breakfast, a selection of drinks)

Day 4: NYUNGWE – MUSANZE & VOLCANOES NATIONAL PARK (5h00 drive)

Have a leisurely breakfast at the lodge. **08h00:** Assisted with check out. Transfer to **MUSANZE & VOLCANOES NATIONAL PARK**, Rwanda is also known as the Land of a Thousand Hills because most of the country is covered by rolling, grassy hills. The Karisimbi Volcano (4,519 m high) in the Virunga Mountains, is the highest point in Rwanda. On a clear day, you will be able to see these as you near your destination. Arrive at the lodge and assisted with check in. Later, you will have a sumptuous lunch at the lodge dining area.



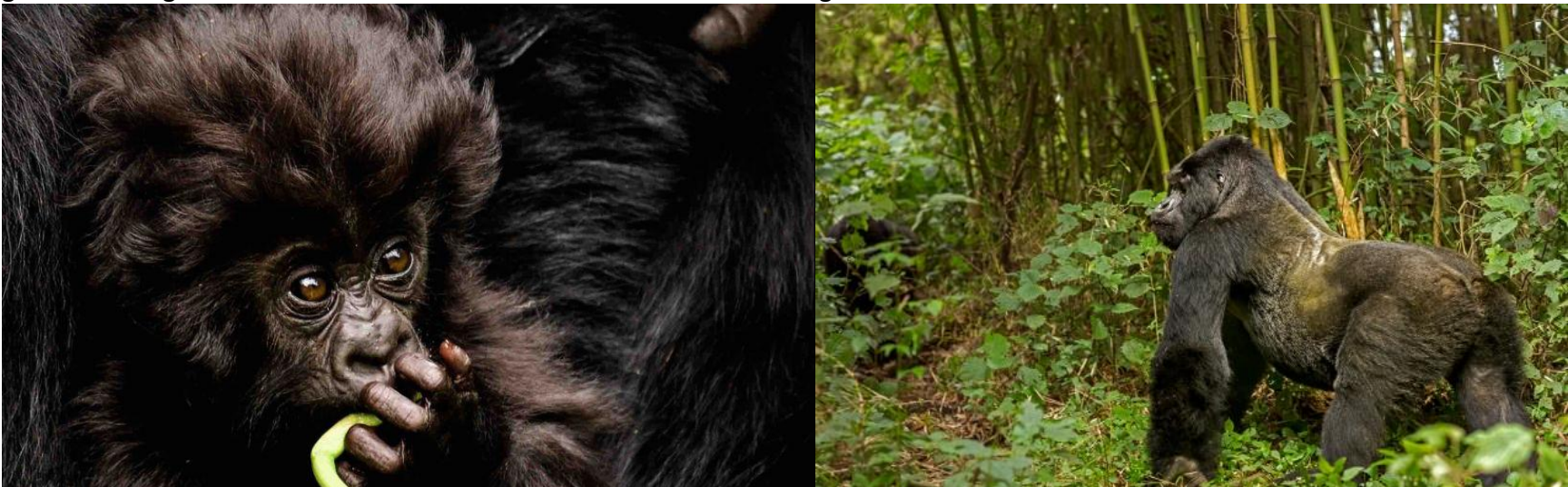
Dinner and overnight stay.

ONE & ONLY GORILLA'S NEST LODGE (All Inclusive- lunch,dinner daily, alcoholic and non-alcoholic beverages with meals and two activities per person per day (as defined by the Resort and subject to change without notice).

Day 5: VOLCANOES NATIONAL PARK (GORILLA TREK / VILLAGE CULTURAL TOUR)

06h30: After an early breakfast at the lodge, proceed to the park headquarters in time for Gorilla Trek briefing at **07h00**. We will then transfer you to the trail head of your guided walk that begins at **08h00**.

Volcanoes National Park is the Rwandan section of the great volcanic massif called the Virunga Mountains that straddles the borders of Rwanda, Uganda and the DRC. The massif covers a huge area of over 8,000km², encompassing six active and three extinct volcanoes. There is no other wildlife experience quite like an encounter with mountain gorillas. That precious hour spent in their company – watching the group playing, sulking, teasing each other, eating, or dozing just like we do – is extraordinary. And the gorilla tracking safaris in Rwanda's Volcanoes National Park are among the best in Africa.



Rwanda is now home to twelve habituated groups of mountain gorillas that are scattered all over Volcanoes National Park. Gorilla trekking can be arduous – some of the groups wander high up the mountainsides – but it is always utterly rewarding. Volcanoes National Park also has a historic connection with gorilla conservation. It was the base for the ground-breaking work of primatologist Dian Fossey which started in the late 1960s and is evocatively portrayed in the book and film *Gorillas in the Mist*. After this memorable experience, you will return to the lodge for lunch. Afternoon you will visit the **Gorilla guardian's village** for a cultural experience. Ibyi Iwacu is changing the traditional perception of what constitutes tourism by turning fate into fame through sharing various aspects of rural cultures and livelihoods into tourist attractions and creating income-generating activities for rural poor people that have reformed from living on bush meat and poaching for generations.



17h00: Return to the evening. Dinner and overnight stay.

ONE & ONLY GORILLA'S NEST LODGE (All Inclusive- lunch,dinner daily, alcoholic and non-alcoholic beverages with meals and two activities per person per day (as defined by the Resort and subject to change without notice).

Day 6: VOLCANOES NATIONAL PARK (GOLDEN MONKEY TREKKING)

Rise early in the morning and breakfast at the lodge. Proceed to the Park's headquarters for briefing about your trek. You will then be transferred by vehicle to the start point of the guided walk that begins at **08h00** in search of the **Golden Monkeys**.

Trekking to see the golden monkeys is another highlight of Volcanoes National Park. The Golden Monkey (*Cercopithecus Mitis Kandti*) is a local subspecies of the widespread Sykes Monkey, also known as the "Blue Monkey" and is endemic to the high altitude forests. There are two habituated groups of Golden Monkey, one group comprises around 80 - 100 members and has its home at the foot of Mt Sabyinyo. As with treks to see the Mountain Gorillas, treks to see the Golden Monkeys take place in the mornings and visitors are permitted to stay for 1 hour with the monkeys. The number of visitors is not limited.



After this memorable experience, you will return to the hotel in time for lunch. Afternoon at leisure
Dinner and overnight stay.

ONE & ONLY GORILLA'S NEST LODGE (All Inclusive- lunch, dinner daily, alcoholic and non-alcoholic beverages with meals and two activities per person per day (as defined by the Resort and subject to change without notice).

Day 7: VOLCANOES – KIGALI (02h30 drive) → DEPART

After breakfast, check out. Have a leisurely scenic drive to **KIGALI**. Proceed to **Kigali International Airport** for your departure flight.
Wishing you an excellent tour!

TOUR INCLUSIONS

- VIP Meet and greet on arrival
- Airport and inter-hotel transfers from day 1 to the last day
- Accommodation at The Retreat Hotel on Half board basis
- **One & Only Nyungwe House includes** breakfast, lunch and dinner daily, minibar, non-alcoholic beverages, alcoholic house beverages with meals and two activities per person per day (as defined by the Resort and subject to change without notice).
- **ONE & ONLY GORILLA'S NEST LODGE (All Inclusive- lunch, dinner daily, alcoholic and non-alcoholic beverages with meals and two activities per person per day (as defined by the Resort and subject to change without notice).**
- Exclusive use of a private safari land cruiser 4x4 with WI-FI in receptive areas
- Services of a professional, experienced English speaking driver guide

- Bottled mineral water in the vehicle during the tour
- 1 Chimpanzee permit per person (**this includes briefing at RDB offices, guide, trek – US\$ 90.-**)
- 1 Canopy walk permit per person (**this includes briefing at RDB offices, guide, trek – US\$ 60.-**)
- 1 Gorilla permit per person (**this includes briefing at RDB offices, guide, trek – US\$ 1,500.-**)
- 1 Golden monkey permit (**this includes briefing at RDB offices, guide, trek – US\$ 100.-**)
- All activities, visits and extra meals mentioned in the itinerary
- Emergency Medical Evacuation Services
- All government taxes.

TOUR EXCLUSIONS

- International and domestic airline tickets unless where indicated,
- Optional extras whilst in Kigali
- Drinks throughout the trip,
- Tips and gratuities,
- Personal expenses such as telephone calls, mini bar, porter-age, travel insurance, etc.

Passenger Information:-

- In case of non-availability, we may have to reroute and provide alternative accommodation at lodges of similar category.
- Passengers should bring only soft sided bags on safaris as our vehicles have limited luggage space.
- All the passengers must have Identification Card/Passport with them throughout their travel.